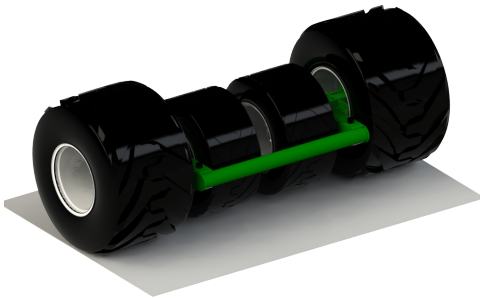
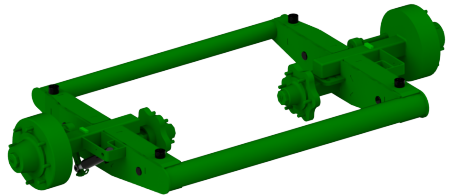


Cashels 4-Wheel Chassis (to suit McHale Fusion 2&3)

The **Cashels 4-Wheel Chassis** is designed to be retrofitted to the *McHale Fusion Baler/ Wrapper* unit. The design is compatible with both the *Fusion 2* and the newer *Fusion 3* models.



4-Wheel Chassis retrofits to Fusion 2 or 3



4-Wheel Chassis retrofits to Fusion 2 or 3

The main feature of the chassis is that it reduces the overall ground pressure by 40%+ when operating in wet conditions. On softer ground, the chassis also increases stability while minimising ground damage.

The two centre wheels have 20mm ground clearance when the Fusion is traveling on road and when operating in normal conditions. The centre wheels only engage with the ground to perform their design function of reducing ground pressure of the Fusion in wet, soft ground conditions.

Standard units are supplied with hydraulic brakes on the outer FAD stub axles. Models with air brakes are also available (TUV approved).

Key Features:

- Chassis fabricated from fine grain steel throughout.
- 8-Stud outer braked stub axles (FAD).
- 6-Stud inner unbraked stub axles (FAD).
- High quality paint finish to match the *Fusion*.
- Stacking brackets for transport and shipping.
- Centre wheels: TIANLI Flotation Radial 500/50R17

Length	Width	Height	Load Capacity	Net Weight
1165mm (46")	2450mm (96")	410mm (16")	7000kg (15400lbs)	355kg (781lbs)